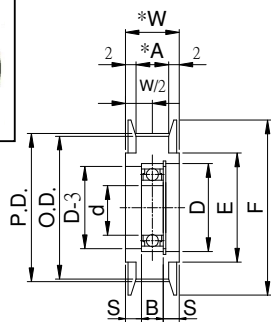




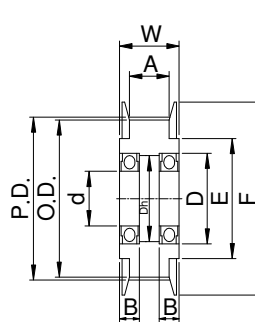
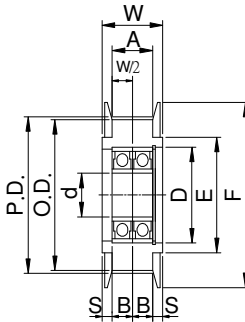
附法蘭 齒型惰輪 FLANGED IDLERS WITH TEETH < S5M型 >



中心軸承型



兩側軸承型



| Type | 材質 | 表面處理 | 法蘭材質 | 法蘭表面處理 |
|-------|--------|------|-------|--------|
| IDAA | A6061 | 陽極 | S45C | 鍍鋅 |
| IDAAA | | | AL | 陽極 |
| IDAH | A6061 | 硬陽 | S45C | 鍍鋅 |
| IDAHA | | | AL | 硬陽 |
| IDAD | A6061 | 黑色陽極 | S45C | 鍍鋅 |
| IDADA | | | AL | 黑色陽極 |
| IDS | S45C | 染黑 | S45C | 染黑 |
| IDSZ | S45C | 鍍鋅 | S45C | 鍍鋅 |
| ISN | S45C | 鍍鎳 | S45C | 鍍鎳 |
| ISC | S45C | 鍍鉻 | S45C | 鍍鉻 |
| ISH | S45C | 無電鍍 | S45C | 無電鍍 |
| ISS | SUS308 | 電解 | A6061 | 陽極 |

▲S5M型 (中心軸承型)

| Type | Catalog No. | | P.D | O.D | F | E | A | W | S | 軸承尺寸 | | | 使用扣環 | | |
|-------|-------------|--------|-------|-------|----|----|----|----|-----|----------|----|----|------|--------|--------|
| | 齒數 | 齒面寬度A | | | | | | | | No. | d | D | B | IDSS | IDSD |
| IDAA | 16 | S5M011 | 25.46 | 24.50 | 32 | 20 | 11 | 16 | 5 | 606ZZx1 | 6 | 17 | 6 | RTWS17 | RTWN17 |
| | 18 | S5M011 | 28.65 | 27.69 | 33 | 22 | 11 | 16 | 5 | 698ZZx1 | 8 | 19 | 6 | RTWS19 | RTWN19 |
| IDAAA | 20 | S5M011 | 31.83 | 30.87 | 36 | 24 | 11 | 16 | 5 | 698ZZx1 | 8 | 19 | 6 | RTWS19 | RTWN19 |
| | | S5M017 | | | | | 17 | 22 | 5 | | | | | | |
| IDAH | 22 | S5M011 | 35.01 | 34.05 | 40 | 27 | 11 | 16 | 4 | 628ZZx1 | 8 | 24 | 8 | RTWS24 | RTWN24 |
| | | S5M017 | | | | | 17 | 22 | 3 | | | | | | |
| IDAD | 24 | S5M011 | 38.20 | 37.24 | 45 | 30 | 11 | 16 | 4 | 6000ZZx1 | 10 | 26 | 8 | RTWS26 | RTWN26 |
| | | S5M017 | | | | | 17 | 22 | 3 | | | | | | |
| IDADA | 25 | S5M011 | 39.79 | 38.83 | 45 | 30 | 11 | 16 | 4 | 6000ZZx1 | 10 | 26 | 8 | RTWS26 | RTWN26 |
| | | S5M017 | | | | | 17 | 22 | 3 | | | | | | |
| IDS | 26 | S5M011 | 41.38 | 40.42 | 48 | 35 | 11 | 16 | 3.5 | 6200ZZx1 | 10 | 30 | 9 | RTWS30 | RTWN30 |
| | | S5M017 | | | | | 17 | 22 | 6.5 | | | | | | |
| IDSN | 28 | S5M011 | 44.56 | 43.60 | 48 | 35 | 11 | 16 | 3.5 | 6200ZZx1 | 10 | 30 | 9 | RTWS30 | RTWN30 |
| | | S5M017 | | | | | 17 | 22 | 6.5 | | | | | | |
| IDSH | 30 | S5M011 | 47.75 | 46.79 | 52 | 36 | 11 | 16 | 3 | 6201ZZx1 | 12 | 32 | 10 | RTWS32 | RTWN32 |
| | | S5M017 | | | | | 17 | 22 | 6 | | | | | | |
| IDSS | 36 | S5M011 | 57.30 | 56.34 | 61 | 45 | 11 | 16 | 3 | 6201ZZx1 | 12 | 32 | 10 | RTWS32 | RTWN32 |
| | | S5M017 | | | | | 17 | 22 | 6 | | | | | | |

▲S5M型 (兩側軸承型)

| Type | Catalog No. | | 軸徑 d | P.D | O.D | F | E | A | W | Dh | 軸承尺寸 | | |
|-------|-------------|--------|------|-------|-------|----|----|----|----|------|-----------|----|---|
| | 齒數 | 齒面寬度A | | | | | | | | | No. | D | B |
| IDAA | 16 | S5M017 | 6 | 25.46 | 24.50 | 32 | 20 | 17 | 22 | 14.5 | 606ZZx 2 | 17 | 6 |
| | | S5M027 | | | | | | | | | | | |
| IDAAA | 18 | S5M017 | 8 | 28.65 | 27.69 | 33 | 22 | 17 | 22 | 16.5 | 698ZZx 2 | 19 | 6 |
| | | S5M027 | | | | | | | | | | | |
| IDAH | 20 | S5M017 | 8 | 31.83 | 30.87 | 36 | 24 | 17 | 22 | 16.5 | 698ZZx 2 | 19 | 6 |
| | | S5M027 | | | | | | | | | | | |
| IDAHA | 22 | S5M017 | 8 | 35.01 | 34.05 | 40 | 27 | 17 | 22 | 19.5 | 608ZZx 2 | 22 | 7 |
| | | S5M027 | | | | | | | | | | | |
| IDAD | 24 | S5M017 | 8 | 38.20 | 37.24 | 45 | 30 | 17 | 22 | 19.5 | 608ZZx 2 | 22 | 7 |
| | | S5M027 | | | | | | | | | | | |
| IDADA | 25 | S5M011 | 6 | 39.79 | 38.83 | 45 | 30 | 11 | 16 | 13 | 696ZZx 2 | 15 | 5 |
| | | S5M017 | | | | | | 17 | 22 | | | | |
| IDS | 25 | S5M017 | 8 | 39.79 | 38.83 | 45 | 30 | 27 | 32 | 14.5 | 606ZZx 2 | 17 | 6 |
| | | S5M027 | | | | | | 27 | 32 | | | | |
| IDSZ | 25 | S5M011 | 8 | 39.79 | 38.83 | 45 | 30 | 11 | 16 | 16.5 | 698ZZx 2 | 19 | 6 |
| | | S5M017 | | | | | | 17 | 22 | | | | |
| ISN | 26 | S5M017 | 10 | 41.38 | 40.42 | 48 | 35 | 27 | 32 | 19.5 | 608ZZx 2 | 22 | 7 |
| | | S5M027 | | | | | | 27 | 32 | | | | |
| ISC | 28 | S5M011 | 10 | 44.56 | 43.60 | 48 | 35 | 11 | 16 | 19.5 | 6900ZZx 2 | 22 | 6 |
| | | S5M017 | | | | | | 17 | 22 | | | | |
| ISH | 30 | S5M017 | 12 | 47.75 | 46.79 | 52 | 36 | 27 | 32 | 25 | 6200ZZx 2 | 30 | 9 |
| | | S5M027 | | | | | | 27 | 32 | | | | |
| IDSS | 36 | S5M017 | 15 | 57.30 | 56.34 | 61 | 45 | 17 | 22 | 29 | 6002ZZx 2 | 32 | 9 |
| | | S5M027 | | | | | | 27 | 32 | | | | |

*例：原IDAA (中心軸承型) IDWAA (兩側軸承型)

| | | | | | |
|-------|-------|---|-------------|---|------|
| Order | TYPE | — | Catalog No. | — | 軸孔內徑 |
| 訂貨代號 | IDWAA | — | 30S5M017 | — | 12 |

註1：如需規格表以外特殊加工，請來電告知。