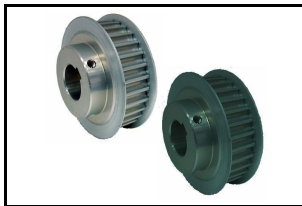
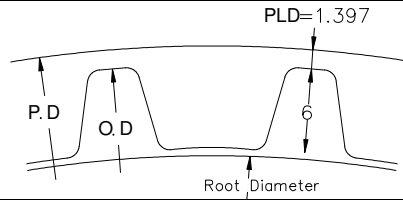




高扭力時規皮帶輪 S14M HIGH TORQUE TIMING PULLEYS < S14M PULLEYS >



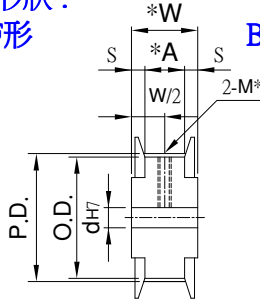
齒形圖：



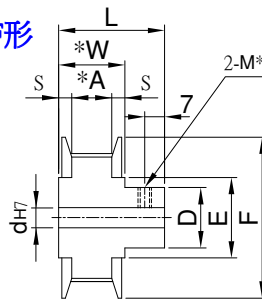
Type	材質	表面處理	法蘭材質	法蘭表面處理
PLAA	A6061	陽極	S45C	鍍鋅
PLAAA	A6061	陽極	AL	陽極
PLAH	A6061	硬陽	S45C	鍍鋅
PLAHA	A6061	硬陽	AL	硬陽
PLAD	A6061	黑色陽極	S45C	鍍鋅
PLADA	A6061	黑色陽極	AL	黑色陽極
PLSD	S45C	染黑	S45C	染黑
PLSZ	S45C	鍍鋅	S45C	鍍鋅
PLSN	S45C	鍍鎳	S45C	鍍鎳
PLSC	S45C	鍍鉻	S45C	鍍鉻
PLSH	S45C	無電解鍍	S45C	無電解鍍
PLSS	SUS303	電解	A6061	陽極

皮帶輪形狀：

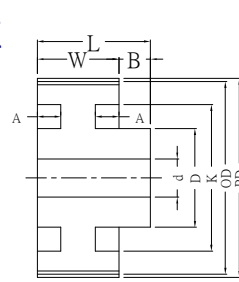
AF形



BF形

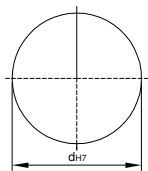


BW型

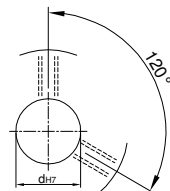
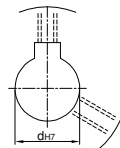


Type	Catalog No.			軸孔規格	軸孔徑dh7		BW		重量(kg)		S	P.D.	O.D.	D	F	E								
	齒數	型式.寬度	皮帶輪形狀		U.T.TG.W孔		K	A																
					AF形	BF/BW			AF形	BF/BW														
PLAA PLAAA PLAH PLAHA PLAD PLADA PLSD PLSZ PLSN PLSC PLSH PLSS	28	S14M046	AF	U	25~82	25~62	K	A	4.1	5.2	3	124.78	121.98	100	140	115								
	30	A:46			25~90	25~62			4.8	6.2														
	32	W:A+(2S+2)			25~100	25~62			5.5	6.9														
	34	L:W+20			25~110	25~75			6.3	8.3														
	36	(L:W+30)			25~117	25~75			7.2	9.2														
	40	S14M066			30~135	30~75			8.9	10.9														
	42	A:66			30~140	30~90			9.9	13														
	44	W:A+(2S+2)			30~143	30~90			11	14.8														
	48	L:W+25			30~160	30~90			13.2	17														
	50	(L:W+35)			30~170	30~90			14.4	18.2														
	60	S14M088			BF	TG			35~90	221							22	20.1	3	267.38	264.59	155	285	245
	64	A:88							35~90	239							22	21.2	3	285.21	282.41	155	300	260
	72	W:A+(2S+2)							35~90	275							22	23.6	3	320.86	318.06	155	340	300
	84	L:W+30							40~90	328							22	29.9	3	374.33	371.54	165	390	350
	96	L:W+40							40~90	382							20	33.5	3	427.81	425.01	165	450	410
120	S14M110	BW	W	40~95			488	20	44.8	3	534.76	531.97	175	550	510									
144	A:110			40~100	596	20	54.3	3	641.71	638.92	180	660	620											
156	W:A+(2S+2)			40~100	648	20	61.4	3	695.19	692.39	180	710	670											
	L:W+35 (L:W+45)																							

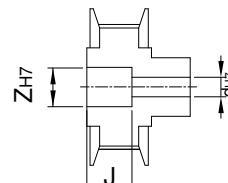
U圓孔(aperture)



T圓孔(aperture)+攻牙(TAP)

TG NEWS JIS KEY WAY+TAP
TG 新JIS鍵槽+攻牙

W SHAP (軸形孔)



Order TYPE — Catalog No. — 軸孔內徑&加工

訂貨代號 PLAA — 28S14M046AF — T25

註1：如需規格表以外特殊加工，請來電告知。

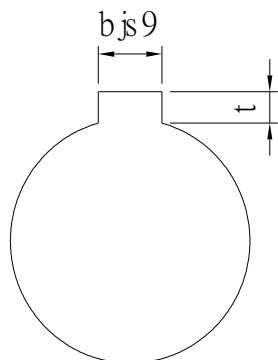
註2：軸孔配合之鍵槽止付螺絲，請對照 [孔徑鍵槽止付螺絲對照表](#)



孔徑 鍵槽 止付螺絲設計對照表

孔徑&鍵槽尺寸表

dH7	鍵槽寬度bjs9		鍵槽深度	t公差
8	3	±0.0125	1.4	+ 0.1 0
9				
10				
11	4	±0.015	1.8	
12				
13				
14	5	±0.015	2.3	
15				
16				
17				
18	6	±0.015	2.8	
19				
20				
21				
22	8	±0.018	3.3	+ 0.2 0
23				
24				
25				
26				
28				
29				
30				
31				
32				
33	10	±0.0215	3.8	
34				
35				
38				
40	12	±0.0215	3.8	
42				
43				
44				
45	14	±0.0215	3.8	
46				
47				
48				
50				
50				



孔徑&止付螺絲對照表

dH7	螺絲規格
4	M3
5	
6	
6.35	
7	
8	M4
9	
10	
11	
12	M5
13	
14	
15	
16	
17	M6
18	
19	
20	
21	
22	
23	
24	
25	
26	
28	M8
29	
30	
31	
32	
33	
34	
35	
37	
38	
40	M10
42	
43	
44	
45	
46	
47	
48	
50	
52	
55	
57	
60	