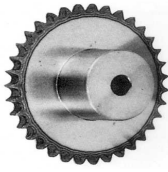




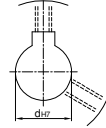
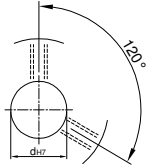
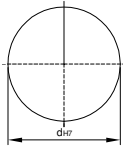
## 鍊齒輪 SPK RS25



U圓孔(aperture)

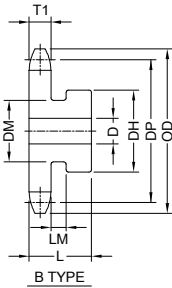
T圓孔(aperture)+攻牙(TAP)

TG NEWS JIS KEY WAY+TAP  
TG 新JIS鍵槽+攻牙



TYPE	材質	表面處理
SPSD	S45C	HRC+染黑
SPSZ	S45C	HRC+鍍鋅
SPSN	S45C	HRC+鍍鎳
SPSC	S45C	HRC+鍍鉻
SPSH	S45C	HRC+無電解鍍
SPSS	SUS303	電解

B



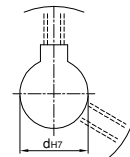
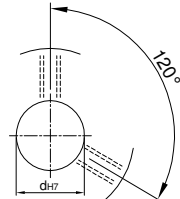
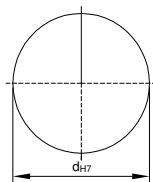
1/4" PITCH (6.35mm) ▲ 表示：有截溝 LM: 3.0 mm T1=2.8

TYPE	Catalog No.			孔徑 D	外徑 OD	節距徑 PD	輪徑			TYPE	Catalog No.			孔徑 D	外徑 OD	節距徑 PD	輪徑		
	齒數T	齒距P	形狀S				凸圓外徑 DH	溝槽 DM	長 L		齒數T	齒距P	形狀S				凸圓外徑 DH	長 L	
SPSD SPSZ SPSN SPSC SPSH SPSS	RS25	B		6	23	18.56	14	11	16	RS25	B		10	78	74.88	40	20		
				6	24	20.55	16	13	16				10	80	76.90	40	20		
				6	25	22.54	18	15	16				10	82	78.91	40	20		
				6	28	24.53	20	17	16				10	84	80.93	45	22		
				6	30	26.53	22	19	16				10	87	82.95	45	22		
				6	32	28.54	24	21	16				10	89	84.97	45	22		
				6	34	30.54	24	24	16				10	91	86.99	45	22		
				6	36	32.55	25	25	16				10	93	88.01	45	22		
				6	38	34.56	25	25	16				10	95	91.03	50	22		
				6	40	36.37	25	25	16				10	97	93.05	50	22		
				6	42	38.58	28	28	16				10	99	95.07	50	22		
				8	44	40.59	28	28	18				10	101	97.09	50	22		
				8	46	42.61	28	28	18				10	103	99.11	50	22		
				8	48	44.62	30	30	18				10	105	101.15	50	22		
				8	50	46.63	30	30	18				10	107	103.15	50	22		
				8	52	48.65	30	30	18				10	109	105.17	50	22		
				8	54	50.66	35	35	18				10	111	107.19	50	22		
				8	56	52.68	35	35	18				10	113	109.21	50	22		
				8	58	54.70	35	35	18				10	115	111.23	50	22		
				8	60	56.71	35	35	18				10	117	113.25	50	22		
				8	62	58.73	35	35	18				10	119	115.27	50	22		
				8	64	60.75	40	40	20				10	121	117.29	50	22		
				8	66	62.77	40	40	20				10	123	119.31	50	22		
				8	68	64.78	40	40	20				10	125	121.33	50	22		
				8	70	66.80	40	40	20				10	135	131.43	50	30		
				8	72	68.82	40	40	20				10	145	141.54	50	30		
				10	74	70.84	40	40	20				10	155	151.64	50	30		
				10	76	72.88	40	40	20				10	165	161.74	50	30		

U圓孔(aperture)

T圓孔(aperture)+攻牙(TAP)

TG NEWS JIS KEY WAY+TAP  
TG 新JIS鍵槽+攻牙



Order  
訂貨代號

TYPE — Catalog No. — 軸孔內徑&加工  
SPSD — 20RS25B — TG10

註1：如需規格表以外特殊加工，請來電告知。

註2：軸孔配合之鍵槽止付螺絲，請對照

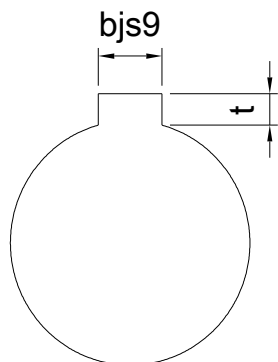
[孔徑鍵槽止付螺絲對照表](#)



## 孔徑 鍵槽 止付螺絲設計對照表

### 孔徑&鍵槽尺寸表

dH7	鍵槽寬度bjs9		鍵槽深度	t公差
8	3	±0.0125	1.4	+ 0.1 0
9				
10				
11	4	±0.015	1.8	
12				
13				
14	5	±0.015	2.3	
15				
16				
17				
18	6	±0.015	2.8	
19				
20				
21				
22	8	±0.018	3.3	+ 0.2 0
23				
24				
25				
26				
28				
29				
30				
31				
32				
33	10	±0.0215	3.8	
34				
35				
38				
40	12	±0.0215	3.8	
42				
43				
44				
45	14	±0.0215	3.8	
46				
47				
48				
50				
50				



### 孔徑&止付螺絲對照表

dH7	螺絲規格
4	M3
5	
6	
6.35	
7	
8	M4
9	
10	
11	
12	M5
13	
14	
15	
16	
17	M6
18	
19	
20	
21	
22	
23	
24	
25	
26	
28	M8
29	
30	
31	
32	
33	
34	
35	
37	
38	
40	M10
42	
43	
44	
45	
46	
47	
48	
50	
52	
55	
57	
60	