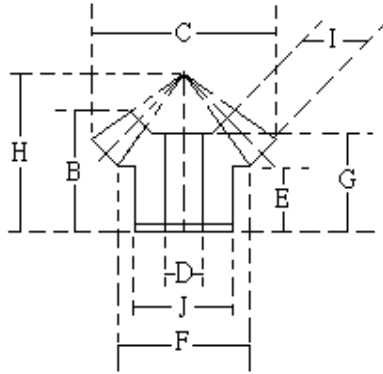




傘齒輪 M5 速比1:1



速比	TYPE	材質	處理
1:1	GUSD	S45C	染黑
	GUSH	S45C	無電解鍍
	GUSS	SUS303	—
	GUMC	MC901	—

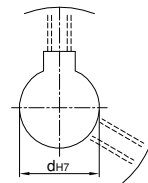
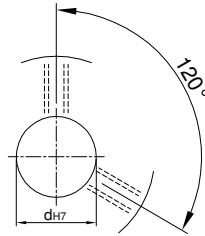
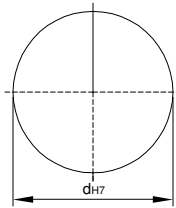
※S45C：齒面高週波

Catalog No.			齒數	軸徑 Bore D	B	C	J	E	F	G	H	I
速比	TYPE	模數										
1:1	GUSD GUSH GUSS GUMC	M5	15	20~30	45	82.07	58	20	60	38.93	64.87	22
			18	20~30	47	97.07	72	20.5	75	39.92	72.83	24
			20	20~38	52	107.07	82	24.5	85	44.74	82.04	25
			24	22~40	54	127.07	102	26.5	105	46.27	93.83	25
			25	25~40	55	132.07	108	26.5	110	48.32	96.62	26
			30	25~50	60	157.07	132	30	135	52.02	112.6	28

U圓孔(aperture)

T圓孔(aperture)+攻牙(TAP)

TG NEWS JIS KEY WAY+TAP
TG 新JIS鍵槽+攻牙



Order
訂貨代號

Catalog No. — 齒數 — 軸孔內徑&加工
1:1GUSD M5 — 30 — T25

註1：如需規格表以外特殊加工，請來電告知。

註2：軸孔配合之鍵槽止付螺絲，請對照孔徑鍵槽止付螺絲對照表

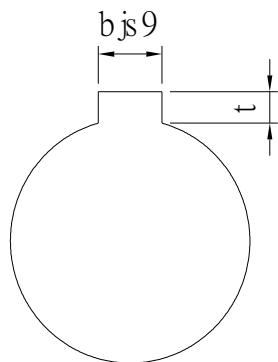
註3：軸徑D 50以上所配合之鍵槽與止付螺絲請於訂貨代號後附註您所需之尺寸。



孔徑 鍵槽 止付螺絲設計對照表

孔徑&鍵槽尺寸表

dH7	鍵槽寬度bjs9		鍵槽深度	t公差
8	3	±0.0125	1.4	+0.1 0
9				
10				
11	4	±0.015	1.8	
12				
13	5	±0.015	2.3	
14				
15				
16				
17	6	±0.018	2.8	
18				
19				
20				
21				
22	8	±0.018	3.3	+0.2 0
23				
24				
25				
26				
28				
29				
30				
31				
32				
33	10	±0.0215	3.8	
34				
35				
38				
40	12	±0.0215	3.8	
42				
43				
44				
45				
46	14	±0.0215	3.8	
47				
48				
49				
50				



孔徑&止付螺絲對照表

dH7	螺絲規格
4	M3
5	
6	
6.35	
7	
8	M4
9	
10	
11	
12	M5
13	
14	
15	
16	
17	M6
18	
19	
20	
21	
22	
23	
24	
25	
26	
28	M8
29	
30	
31	
32	
33	
34	
35	
37	
38	
40	M10
42	
43	
44	
45	
46	
47	
48	
50	
52	
55	
57	
60	