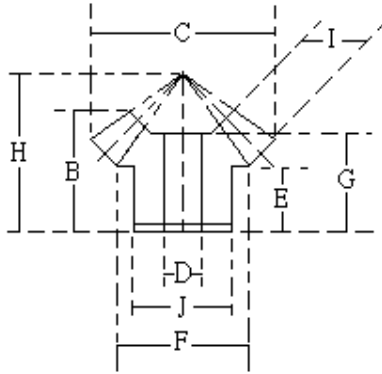




## 傘齒輪 M3 速比1:1



速比	TYPE	材質	處理
1:1	GUSD	S45C	染黑
	GUSH	S45C	無電解鍍
	GUSS	SUS303	—
	GUMC	MC901	—

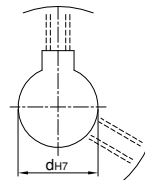
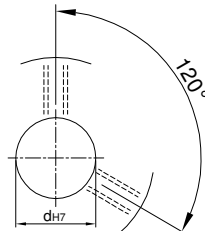
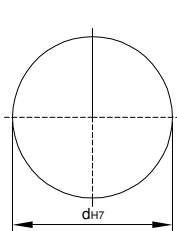
※S45C：齒面高週波

Catalog No.			齒數	軸徑 Bore D	B	C	J	E	F	G	H	I
速比	TYPE	模數										
1:1	GUSD GUSH GUSS GUMC	M3	12	12~15	28	40.24	30	15.5	30	25.12	36.39	12
			15	12~15	30	49.24	36	16	38	26.56	42.05	13
			18	15~20	32	58.24	45	16.5	47	28.39	47.11	15
			20	15~25	37	64.24	50	21	52	32.85	55.02	15
			24	15~30	43	76.24	60	24.5	62	38.76	65.57	17
			25	15~30	45	79.24	62	26.5	65	40.7	69.04	17
			30	20~38	45	94.24	74	24	80	40.74	73.73	21

U圓孔(aperture)

T圓孔(aperture)+攻牙(TAP)

TG NEWS JIS KEY WAY+TAP  
TG 新JIS鍵槽+攻牙



Order  
訂貨代號

Catalog No. — 齒數 — 軸孔內徑&加工  
1:1GUSDM3 — 30 — T20

註1：如需規格表以外特殊加工，請來電告知。

註2：軸孔配合之鍵槽止付螺絲，請對照孔徑鍵槽止付螺絲對照表

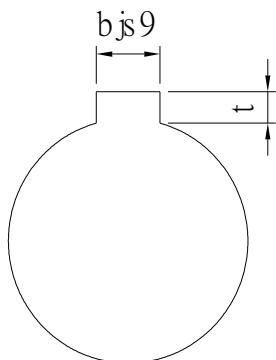
註3：軸徑D 50以上所配合之鍵槽與止付螺絲請於訂貨代號後附註您所需之尺寸。



## 孔徑 鍵槽 止付螺絲設計對照表

### 孔徑&鍵槽尺寸表

dH7	鍵槽寬度bjs9		鍵槽深度	t公差
8	3	±0.0125	1.4	+ 0.1 0
9				
10				
11	4	1.8		
12				
13	5	2.3		
14				
15				
16				
17	6	2.8		
18				
19				
20	8	±0.018	3.3	+ 0.2 0
21				
22				
23				
24				
25				
26				
28				
29				
30				
31	10	±0.0215	3.8	
32				
33				
34				
35	12	±0.0215	3.8	
38				
40				
42				
43	14	±0.0215	3.8	
44				
45				
46				
47				
48				
50				



### 孔徑&止付螺絲對照表

dH7	螺絲規格
4	M3
5	
6	
6.35	
7	
8	M4
9	
10	
11	
12	M5
13	
14	
15	
16	M6
17	
18	
19	
20	
21	
22	
23	
24	
25	
26	M8
28	
29	
30	
31	
32	
33	
34	
35	
37	
38	M10
40	
42	
43	
44	
45	
46	
47	
48	
50	
52	
55	
57	
60	