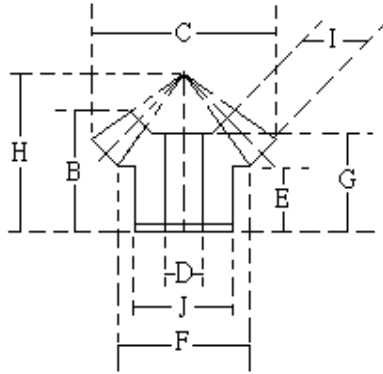




傘齒輪 M2.5 速比1:1



速比	TYPE	材質	處理
1:1	GUSD	S45C	染黑
	GUSH	S45C	無電解鍍
	GUSS	SUS303	—
	GUMC	MC901	—

※S45C：齒面高週波

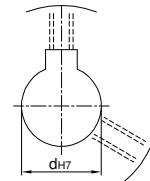
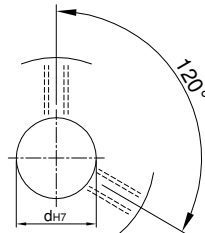
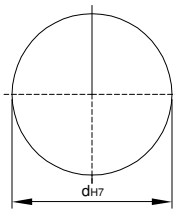
Catalog No.			齒數	軸徑 Bore D	B	C	J	E	F	G	H	I
速比	TYPE	模數										
1:1	GUSD GUSH GUSS GUMC	M2.5	12	10~12	26	33.54	24	15.5	25	23.76	33	10
			15	10~15	28	41.036	30	16	32	25.33	37.3	12
			16	12~18	28	43.535	32	15.5	34.5	25.47	38.5	12
			18	12~18	29	48.536	36	16	38	25.46	41.91	12
			20	12~20	30	53.536	41	16	43	27.13	44.69	13
			24	15~25	34	63.536	48	17	50	30.72	52.25	15
			25	15~25	35	66.036	52	18.5	54	31.76	53.81	16
			30	15~30	40	78.536	63	21	65	36.67	63.6	18

U圓孔(aperture)

T圓孔(aperture)+攻牙(TAP)

TG NEWS JIS KEY WAY+TAP

TG 新JIS鍵槽+攻牙



Order
訂貨代號

Catalog No.	—	齒數	—	軸孔內徑&加工
1:1GUSDM2.5	—	30	—	T15

註1：如需規格表以外特殊加工，請來電告知。

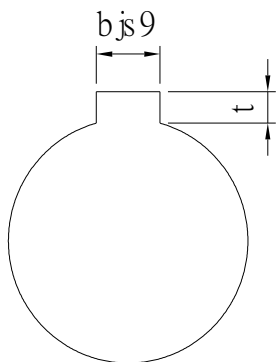
註2：軸孔配合之鍵槽止付螺絲，請對照孔徑鍵槽止付螺絲對照表



孔徑 鍵槽 止付螺絲設計對照表

孔徑&鍵槽尺寸表

dH7	鍵槽寬度bjs9		鍵槽深度	t公差
8	3	±0.0125	1.4	+ 0.1 0
9				
10				
11	4	±0.015	1.8	
12				
13	5	±0.015	2.3	
14				
15				
16				
17	6	±0.018	2.8	
18				
19				
20				
21				
22	8	±0.018	3.3	+ 0.2 0
23				
24				
25				
26				
28				
29				
30				
31				
32				
33				
34				
35				
38	12	±0.0215	3.8	
40				
42				
43				
44				
45				
46				
47				
48	14	±0.0215	3.8	
50				



孔徑&止付螺絲對照表

dH7	螺絲規格
4	M3
5	
6	
6.35	
7	
8	M4
9	
10	
11	
12	M5
13	
14	
15	
16	
17	M6
18	
19	
20	
21	
22	
23	
24	
25	
26	
28	M8
29	
30	
31	
32	
33	
34	
35	
37	
38	
40	M10
42	
43	
44	
45	
46	
47	
48	
50	
52	
55	
57	
60	