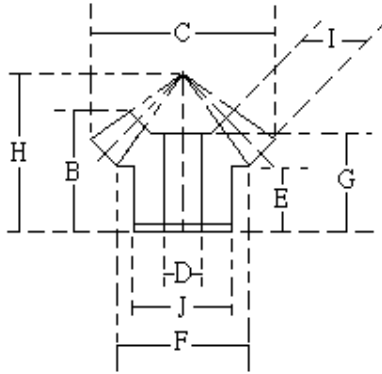




傘齒輪 M2 速比1:1



速比	TYPE	材質	處理
1:1	GUSD	S45C	染黑
	GUSH	S45C	無電解鍍
	GUSS	SUS303	—
	GUMC	MC901	—

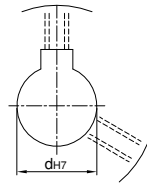
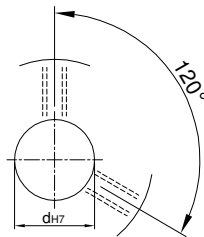
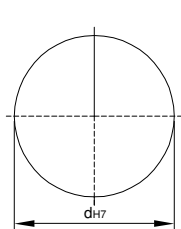
※S45C：齒面高週波

Catalog No.			齒數	軸徑 Bore D	B	C	J	E	F	G	H	I
速比	TYPE	模數										
1:1	GUSD GUSH GUSS GUMC	M2	15	8~10	20	32.83	25	10	25	17.81	27.82	9
			18	10~12	20	38.83	31	11.5	31	19.36	32.07	10
			20	10~15	25	42.83	34	14	35	22.35	36.36	11
			24	12~20	28.5	50.83	39	15	41	25.48	42.44	13
			25	12~20	30.5	52.83	43	18	45	27.78	45.41	13
			30	12~25	33.5	62.83	50	18.5	53	31.3	51.98	15

U圓孔(aperture)

T圓孔(aperture)+攻牙(TAP)

TG NEWS JIS KEY WAY+TAP
TG 新JIS鍵槽+攻牙



Order
訂貨代號

Catalog No. — 齒數 — 軸孔內徑&加工
1:1GUSDM2 — 30 — T12

註1：如需規格表以外特殊加工，請來電告知。

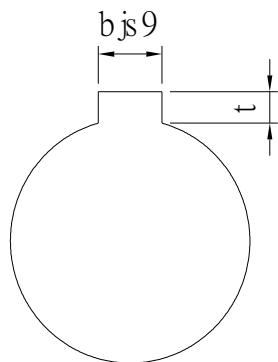
註2：軸孔配合之鍵槽止付螺絲，請對照孔徑鍵槽止付螺絲對照表



孔徑 鍵槽 止付螺絲設計對照表

孔徑&鍵槽尺寸表

dH7	鍵槽寬度bjs9		鍵槽深度	t公差
8	3	±0.0125	1.4	+ 0.1 0
9				
10				
11	4	±0.015	1.8	
12				
13				
14	5	±0.015	2.3	
15				
16				
17				
18	6	±0.015	2.8	
19				
20				
21				
22	8	±0.018	3.3	+ 0.2 0
23				
24				
25				
26				
28				
29				
30				
31				
32				
33	10	±0.0215	3.8	
34				
35				
38				
40	12	±0.0215	3.8	
42				
43				
44				
45	14	±0.0215	3.8	
46				
47				
48				
50				
50				



孔徑&止付螺絲對照表

dH7	螺絲規格
4	M3
5	
6	
6.35	
7	
8	M4
9	
10	
11	
12	M5
13	
14	
15	
16	
17	M6
18	
19	
20	
21	
22	
23	
24	
25	
26	
28	M8
29	
30	
31	
32	
33	
34	
35	
37	
38	
40	M10
42	
43	
44	
45	
46	
47	
48	
50	
52	
55	
57	
60	