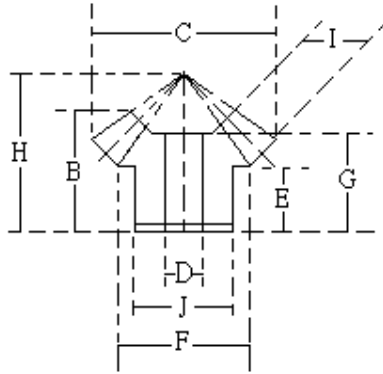




傘齒輪 M1.5 速比1:1

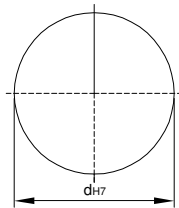


速比	TYPE	材質	處理
1:1	GUSD	S45C	染黑
	GUSH	S45C	無電解鍍
	GUSS	SUS303	—
	GUMC	MC901	—

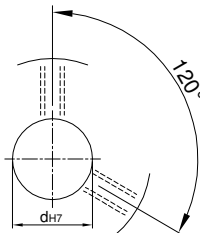
※S45C：齒面高週波

Catalog No.			齒數	軸徑 Bore D	B	C	J	E	F	G	H	I
速比	TYPE	模數										
1:1	GUSD GUSH GUSS GUMC	M1.5	15	8~10	15	24.62	18.5	8	18.5	13.45	21.03	6.5
			18	8~10	18	29.12	23	9.5	23	15.91	26.23	8
			20	8~12	18.5	32.12	26	10	26	16.31	27.18	8
			24	10~15	22	38.12	30	11	30	19.84	32.28	10
			25	10~15	23	39.62	31.5	12	31.5	20.81	34.02	10
			30	12~18	27	47.12	39	15	39	24.81	40.35	12

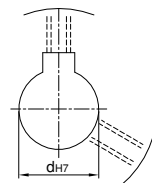
U圓孔(aperture)



T圓孔(aperture)+攻牙(TAP)



TG NEWS JIS KEY WAY+TAP
TG 新JIS鍵槽+攻牙



Order
訂貨代號

Catalog No.	—	齒數	—	軸孔內徑&加工
1:1GUSDM1.5	—	30	—	T12

註1：如需規格表以外特殊加工，請來電告知。

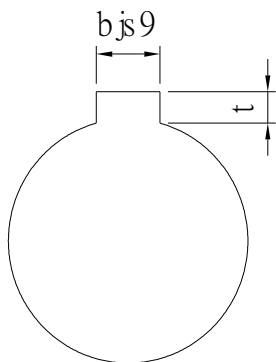
註2：軸孔配合之鍵槽止付螺絲，請對照孔徑鍵槽止付螺絲對照表



孔徑 鍵槽 止付螺絲設計對照表

孔徑&鍵槽尺寸表

dH7	鍵槽寬度bjs9		鍵槽深度	t公差
8	3	±0.0125	1.4	+0.1 0
9				
10				
11	4	±0.015	1.8	
12				
13				
14	5	±0.015	2.3	
15				
16				
17				
18	6	±0.015	2.8	
19				
20				
21				
22	8	±0.018	3.3	+0.2 0
23				
24				
25				
26				
28				
29				
30				
31				
32				
33	10	±0.0215	3.8	
34				
35				
38				
40	12	±0.0215	3.8	
42				
43				
44				
45	14	±0.0215	3.8	
46				
47				
48				
50				
50				



孔徑&止付螺絲對照表

dH7	螺絲規格
4	M3
5	
6	
6.35	
7	
8	M4
9	
10	
11	
12	M5
13	
14	
15	
16	
17	M6
18	
19	
20	
21	
22	
23	
24	
25	
26	
28	M8
29	
30	
31	
32	
33	
34	
35	
37	
38	
40	M10
42	
43	
44	
45	
46	
47	
48	
50	
52	
55	
57	
60	