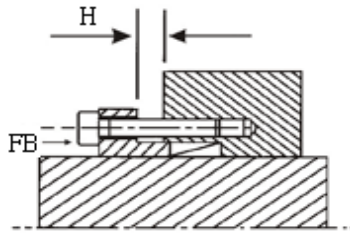
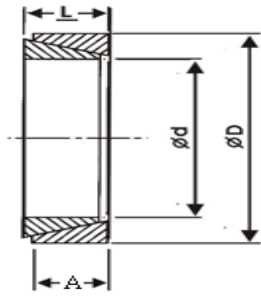




免鍵式軸套 EC非自動對心型



T : 在 T S 下之傳達扭距

F : 軸向推力

P : 輪轂面壓力



TYPE	d	D	L	A	H				T	F	P ₂	FB
	mm	mm	mm	mm	1	2	3	4	Nm	KN		
EC-6	6	9	4.5	3.7	2.5	2.5	3	4	2	0.8	115	12
EC-8	8	11	4.5	3.7	2.5	2.5	3	4	5	1.2	120	18
EC-10	10	13	4.5	3.7	2.5	2.5	3	4	10	2	120	22
EC-11	11	14	4.5	3.7	2.5	2.5	3	4	10	2	120	22
EC-12	12	15	4.5	3.7	2.5	2.5	3	4	11	2	115	23
EC-13	13	16	4.5	3.7	2.5	2.5	3	4	13	2	110	24
EC-14	14	18	6.3	5.3	3	4	4	5	22	3	90	26
EC-15	15	19	6.3	5.3	3	4	4	5	25	3	90	27
EC-16	16	20	6.3	5.3	3	4	4	5	27	3	90	27
EC-17	17	21	6.3	5.3	3	4	4	5	30	3	90	28
EC-18	18	22	6.3	5.3	3	4	4	5	32	3	90	30
EC-19	19	24	6.3	5.3	3	4	4	5	40	4	90	33
EC-20	20	25	6.3	5.3	3	4	4	5	44	4	90	34
EC-22	22	26	6.3	5.3	3	4	4	5	58	4	90	35
EC-24	24	28	6.3	5.3	3	4	4	5	68	6	100	37
EC-25	25	30	6.3	5.3	3	4	4	5	75	6	100	40
EC-28	28	32	6.3	5.3	3	4	4	5	90	6	100	40
EC-30	30	35	6.3	5.3	3	4	4	5	100	7	100	40
EC-32	32	36	6.3	5.3	3	4	4	5	120	7	100	50
EC-35	35	40	7	6	3	4	4	5	160	9	100	40
EC-38	38	44	7	6	4	5	5	6	130	10	100	60
EC-40	40	45	8	6.6	4	5	5	6	230	11	100	70
EC-42	42	48	8	6.6	4	5	5	6	260	12	100	70
EC-45	45	52	10	8.6	4	5	5	6	390	17	100	110
EC-48	48	55	10	8.6	4	5	5	6	430	18	100	110
EC-50	50	57	10	8.6	4	5	5	6	470	19	110	110
EC-55	55	62	10	10.4	4	5	5	6	580	21	110	120
EC-56	56	64	12	10.4	4	5	6	7	790	25	110	150
EC-60	60	68	12	10.4	4	5	6	7	840	28	110	160
EC-65	65	73	12	10.4	4	5	6	7	1000	30	100	160
EC-70	70	79	14	12.2	4	5	6	7	1300	38	100	200
EC-75	75	84	14	12.2	4	5	6	7	1500	41	100	220
EC-80	80	91	17	15	5	6	7	8	2100	54	100	300
EC-90	90	101	17	15	5	6	7	8	2700	61	100	320
EC-100	100	114	21	18.7	5	6	8	9	4200	84	100	440

Order TYPE

訂貨代號 EC-20

註1：如需規格外特殊加工請來電告知