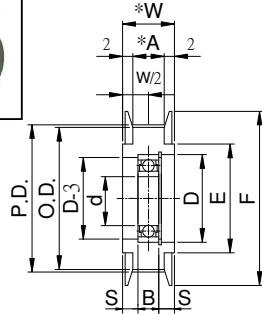




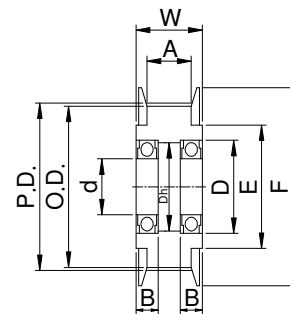
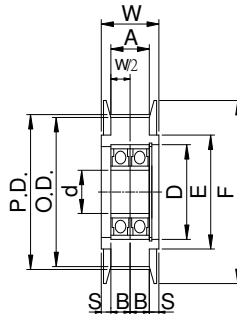
附法蘭 齒型惰輪 FLANGED IDLERS WITH TEETH < 2GT型 >



中心軸承型



兩側軸承型



| Type | 材質 | 表面處理 | 法蘭材質 | 法蘭表面處理 |
|-------|--------|------|-------|--------|
| IDAA | A6061 | 陽極 | S45C | 鍍鉍 |
| IDAAA | | | AL | 陽極 |
| IDAH | A6061 | 硬陽 | S45C | 鍍鉍 |
| IDAHA | | | AL | 硬陽 |
| IDAD | A6061 | 黑色陽極 | S45C | 鍍鉍 |
| IDADA | | | AL | 黑色陽極 |
| IDSJ | S45C | 染黑 | S45C | 染黑 |
| ISZ | S45C | 鍍鉍 | S45C | 鍍鉍 |
| ISN | S45C | 鍍鉍 | S45C | 鍍鉍 |
| ISC | S45C | 鍍鉍 | S45C | 鍍鉍 |
| ISH | S45C | 無電鍍 | S45C | 無電鍍 |
| ISGS | STU308 | 電解 | A6061 | 陽極 |

▲2GT型 (中心軸承型)

| Type | Catalog No. | | P.D | O.D | F | E | A | W | S | 軸承尺寸 | | | 使用扣環 | | |
|--------------------------------|-------------|--------|-------|-------|----|----|----|----|-----|---------|----|----|------|--------|--------|
| | 齒數 | 齒面寬度A | | | | | | | | No. | d | D | B | IDSS | IDSD |
| IDAA IDAAA IDAH IDAHA | 40 | 2GT005 | 25.46 | 24.96 | 30 | 20 | 5 | 9 | 2.5 | 695ZZx1 | 5 | 13 | 4 | RTWS13 | RTWN13 |
| | | 2GT007 | | | | | 7 | 11 | 3 | | 6 | 15 | 5 | RTWS15 | RTWN15 |
| | | 2GT011 | | | | | 11 | 15 | 5 | | 6 | 15 | 5 | RTWS15 | RTWN15 |
| IDAD IDADA | 48 | 2GT005 | 30.56 | 30.05 | 35 | 25 | 5 | 9 | 2 | 696ZZx1 | 6 | 15 | 5 | RTWS15 | RTWN15 |
| | | 2GT007 | | | | | 7 | 11 | 3 | | 6 | 15 | 5 | RTWS15 | RTWN15 |
| IDSJ ISZ ISN | 50 | 2GT005 | 31.83 | 31.32 | 35 | 25 | 5 | 9 | 2 | 696ZZx1 | 6 | 15 | 5 | RTWS15 | RTWN15 |
| | | 2GT007 | | | | | 7 | 11 | 2.5 | | 8 | 19 | 6 | RTWS19 | RTWN19 |
| IDSC IDSH IDSS | 60 | 2GT005 | 38.20 | 37.69 | 44 | 32 | 5 | 9 | 1.5 | 698ZZx2 | 10 | 22 | 6 | RTWS22 | RTWN22 |
| | | 2GT007 | | | | | 7 | 11 | 2.5 | | 10 | 22 | 6 | RTWS22 | RTWN22 |

▲2GT型 (兩側軸承型)

| Type | Catalog No. | | 軸徑 d | P.D | O.D | F | E | A | W | Dh | 軸承尺寸 | | | | | | |
|--------------------------------|-------------|--------|------|-------|-------|----|----|----|----|------|---------|----|-----|-----|---------|----|---|
| | 齒數 | 齒面寬度A | | | | | | | | | No. | D | B | | | | |
| IDAA IDAAA | 32 | 2GT005 | 3 | 20.37 | 19.86 | 25 | 16 | 5 | 9 | 5 | 673ZZx2 | 6 | 2.5 | | | | |
| | | 2GT007 | | | | | | 7 | 11 | | | | | | | | |
| | | 2GT011 | | | | | | 11 | 15 | | | | | 9.5 | 694ZZx2 | 11 | 4 |
| IDAH IDAHA IDAD IDADA | 36 | 2GT005 | 4 | 22.92 | 22.41 | 28 | 18 | 5 | 9 | 6 | 674ZZx2 | 7 | 2.5 | | | | |
| | | 2GT007 | | | | | | 7 | 11 | | | | | | | | |
| | | 2GT011 | | | | | | 11 | 15 | | | | | 11 | 695ZZx2 | 13 | 4 |
| IDSJ ISZ ISN | 40 | 2GT005 | 4 | 25.46 | 24.96 | 30 | 20 | 5 | 9 | 6 | 674ZZx2 | 7 | 2.5 | | | | |
| | | 2GT007 | | | | | | 7 | 11 | | | | | 11 | 695ZZx2 | 13 | 4 |
| | | 2GT011 | | | | | | 11 | 15 | | | | | 13 | 696ZZx2 | 15 | 5 |
| IDSC IDSH IDSS | 48 | 2GT011 | 8 | 30.56 | 30.05 | 35 | 25 | 11 | 15 | 16.5 | 698ZZx2 | 19 | 6 | | | | |
| | | 2GT011 | | | | | | 11 | 15 | | | | | 13 | 696ZZx2 | 15 | 5 |
| | 50 | 2GT011 | 8 | 31.83 | 31.32 | 35 | 25 | 11 | 15 | 16.5 | 698ZZx2 | 19 | 6 | | | | |
| | | 2GT011 | | | | | | 11 | 15 | | | | | 13 | 696ZZx2 | 15 | 5 |
| | 60 | 2GT011 | 8 | 38.20 | 37.69 | 44 | 32 | 11 | 15 | 16.5 | 698ZZx2 | 19 | 6 | | | | |

*例：原IDAA (中心軸承型) IDWAA (兩側軸承型)

Order TYPE — Catalog No. — 軸孔內徑
 訂貨代號 IDWAA — 402GT005 — 5

註1：如需規格表以外特殊加工，請來電告知。