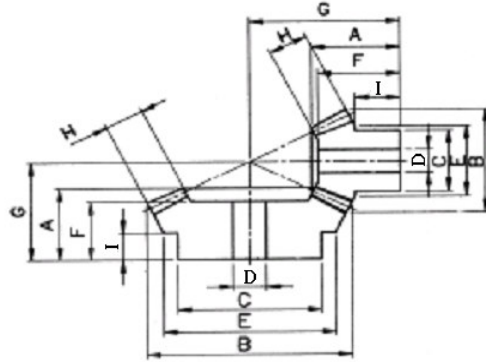




傘齒輪 M1~M5 速比1:3



速比	TYPE	材質	處理
1:3	GUSD	S45C	染黑
	GUSH	S45C	無電解鍍
	GUSS	SUS303	—
	GUMC	MC901	—

※S45C：齒面高週波

模數M=1~5

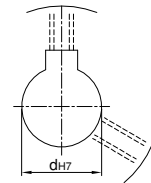
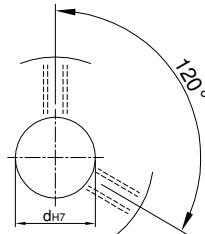
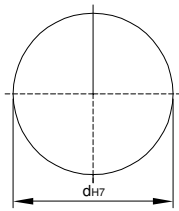
Catalog No.			齒數	軸徑 Bore D	A	B	C	I	E	F	G	H
速比	TYPE	模數										
1:3	GUSD GUSH GUSS GUMC	M1	20	6	21	21.9	15	14	15	20.36	45.05	6
			60	10	25	60.63	35	16.5	56	21.37	32.33	6
		M1.5	20	8	27	32.85	25	14.5	25	26.04	60.26	12
			60	10	35	90.95	50	23.5	85.65	30.71	45.14	12
		M2	20	10	35	43.79	34.5	19.5	34.5	33.76	80.29	15
			60	20	50	121.26	60	26	108	43.9	63.81	15
		M2.5	20	16	45	54.74	43	24	43	43.51	100.44	20
			60	25	50	151.58	70	25	138.54	43.17	66.9	20
		M3	20	15	50	65.69	50	26	50	47.59	117.46	23
			60	25	51	181.9	90	24	168.14	41.41	71.57	23
		M4	20	20	70	87.59	68	38.5	68	67.67	160.57	30
			60	25	80	242.53	95	34.5	217.86	67.79	107.62	30
		M5	20	25	75	109.49	80	37	80	71.6	190.56	35
			60	25	90	303.16	140	41	227.07	78.84	125.24	35

U圓孔(aperture)

T圓孔(aperture)+攻牙(TAP)

TG NEWS JIS KEY WAY+TAP

TG 新JIS鍵槽+攻牙



Order
訂貨代號

Catalog No.	—	齒數	—	軸孔內徑&加工
1:3GUSD M1	—	20	—	U6

Order
訂貨代號

Catalog No.	—	齒數	—	軸孔內徑&加工
1:3GUSD M1	—	60	—	U10

註1：如需規格表以外特殊加工，請來電告知。

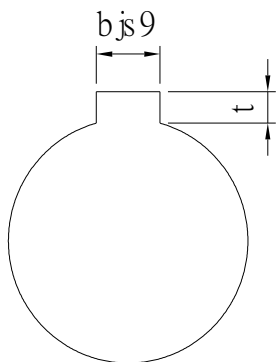
註2：軸孔配合之鍵槽止付螺絲，請對照孔徑鍵槽止付螺絲對照表



孔徑 鍵槽 止付螺絲設計對照表

孔徑&鍵槽尺寸表

dH7	鍵槽寬度bjs9		鍵槽深度	t公差
8	3	±0.0125	1.4	+ 0.1 0
9				
10				
11	4	±0.015	1.8	
12				
13	5	±0.015	2.3	
14				
15				
16				
17	6	±0.018	2.8	
18				
19				
20				
21				
22	8	±0.018	3.3	+ 0.2 0
23				
24				
25				
26				
28				
29				
30				
31				
32				
33	10	±0.0215	3.8	
34				
35				
38				
40	12	±0.0215	3.8	
42				
43				
44				
45				
46	14	±0.0215	3.8	
47				
48				
49				
50				



孔徑&止付螺絲對照表

dH7	螺絲規格
4	M3
5	
6	
6.35	
7	
8	M4
9	
10	
11	
12	M5
13	
14	
15	
16	
17	M6
18	
19	
20	
21	
22	
23	
24	
25	
26	
28	M8
29	
30	
31	
32	
33	
34	
35	
37	
38	
40	M10
42	
43	
44	
45	
46	
47	
48	
50	
52	
55	
57	
60	