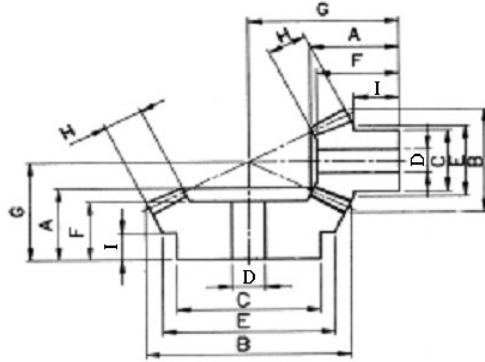




傘齒輪 M1.5~M4 速比1:1.5



速比	TYPE	材質	處理
1:1.5	GUSD	S45C	染黑
	GUSH	S45C	無電解鍍
	GUSS	SUS303	—
	GUMC	MC901	—

※S45C：齒面高週波

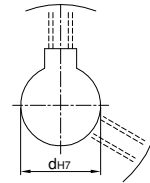
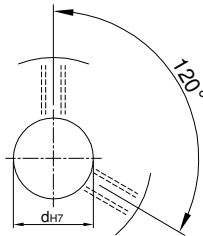
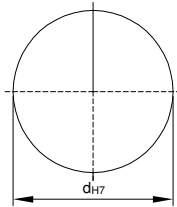
模數M=1.5~4

Catalog No.			齒數	軸徑 Bore D	A	B	C	I	E	F	G	H
速比	TYPE	模數										
1:1.5	GUSD GUSH GUSS GUMC	M1.5	20	6	21	32.49	25	11.5	25	19.47	35.45	9
			30	10	23	46.66	35	13	39.59	20.29	32.18	9
		M2	20	10	26	43.33	34	13.5	34	24.22	45.28	12
			30	10	26	62.22	45	13.5	53.9	22.67	38.28	12
		M2.5	20	12	34	54.16	42	16.5	42	31.78	56.49	17
			30	15	34	77.77	60	16.5	65.99	29.42	48.27	17
		M3	20	15	46	64.99	50	24	50	43.43	72.51	21
			30	18	45	93.33	65	24.5	80.29	39.9	61.82	21
M4	20	20	52	86.65	65	22.5	65	48.89	87.35	28		
	30	25	48	124.43	80	23	110.02	42.59	70.43	28		

U圓孔(aperture)

T圓孔(aperture)+攻牙(TAP)

TG NEWS JIS KEY WAY+TAP
TG 新JIS鍵槽+攻牙



Order
訂貨代號

Catalog No.	—	齒數	—	軸孔內徑&加工
1:1.5GUSD M2	—	20	—	U10

Order
訂貨代號

Catalog No.	—	齒數	—	軸孔內徑&加工
1:1.5GUSD M2	—	30	—	U10

註1：如需規格表以外特殊加工，請來電告知。

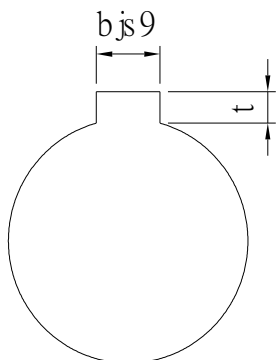
註2：軸孔配合之鍵槽止付螺絲，請對照孔徑鍵槽止付螺絲對照表



孔徑 鍵槽 止付螺絲設計對照表

孔徑&鍵槽尺寸表

dH7	鍵槽寬度bjs9		鍵槽深度	t公差
8	3	±0.0125	1.4	+0.1 0
9				
10				
11	4	±0.015	1.8	
12				
13				
14	5	±0.015	2.3	
15				
16				
17				
18	6	±0.015	2.8	
19				
20				
21				
22	8	±0.018	3.3	+0.2 0
23				
24				
25				
26				
28				
29				
30				
31				
32				
33	10	±0.0215	3.8	
34				
35				
38				
40	12	±0.0215	3.8	
42				
43				
44				
45	14	±0.0215	3.8	
46				
47				
48				
50				
50				



孔徑&止付螺絲對照表

dH7	螺絲規格
4	M3
5	
6	
6.35	
7	
8	M4
9	
10	
11	
12	M5
13	
14	
15	
16	
17	M6
18	
19	
20	
21	
22	
23	
24	
25	
26	
28	M8
29	
30	
31	
32	
33	
34	
35	
37	
38	
40	M10
42	
43	
44	
45	
46	
47	
48	
50	
52	
55	
57	
60	