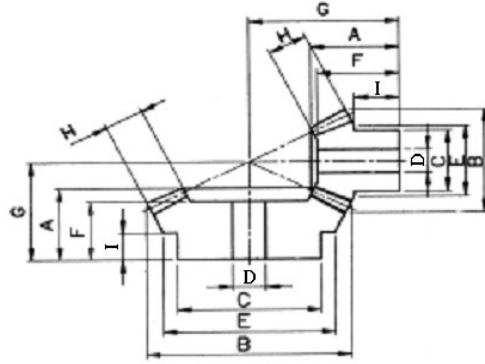




## 傘齒輪 M1~M5 速比1:2



速比	TYPE	材質	處理
1:2	GUSD	S45C	染黑
	GUSH	S45C	無電解鍍
	GUSS	SUS303	—
	GUMC	MC901	—

※S45C：齒面高週波

模數M=1~5

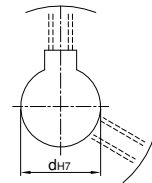
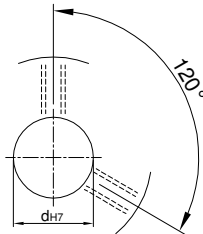
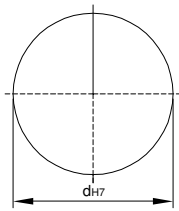
Catalog No.			齒數	軸徑 Bore D	A	B	C	I	E	F	G	H
速比	TYPE	模數										
1:2	GUSD GUSH GUSS GUMC	M1	18	6	16	19.79	15.5	9.5	15.5	15.25	28.32	6
			36	8	14	36.89	33	7.5	33	11.69	19.69	6
		M1.5	18	8	24	29.68	23	12	23	23.05	39.86	12
			36	10	24	55.34	40	14	50	21.29	31.33	12
		M2	18	12	34	39.58	30	18.5	30	32.65	56.02	15
			36	12	28	73.79	60	14	66	24.58	38.17	15
		M2.5	18	12	36	49.47	38.5	17.5	38.5	34.29	64.18	18
			36	16	32	92.24	75	17	84.52	27.87	45.01	18
		M3	18	16	48	59.37	46	23	46	46.1	78.85	25
			36	20	40	110.68	70	19.5	100.17	35.57	54.25	25
		M4	18	20	55	79.16	62	26	62	51.61	100.79	28
			36	20	47	147.58	95	22.5	134.16	37.28	68.14	28
		M5	18	25	69	98.94	77	37.5	77	65.38	130.6	30
			36	25	56	184.47	100	25	165.47	44.47	84.44	30

U圓孔(aperture)

T圓孔(aperture)+攻牙(TAP)

TG NEWS JIS KEY WAY+TAP

TG 新JIS鍵槽+攻牙



Order  
訂貨代號

Catalog No.	—	齒數	—	軸孔內徑&加工
1:2GUSD M1	—	18	—	U6

Order  
訂貨代號

Catalog No.	—	齒數	—	軸孔內徑&加工
1:2GUSD M1	—	36	—	U8

註1：如需規格表以外特殊加工，請來電告知。

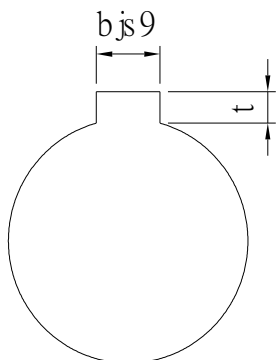
註2：軸孔配合之鍵槽止付螺絲，請對照孔徑鍵槽止付螺絲對照表



## 孔徑 鍵槽 止付螺絲設計對照表

### 孔徑&鍵槽尺寸表

dH7	鍵槽寬度bjs9		鍵槽深度	t公差
8	3	±0.0125	1.4	+0.1 0
9				
10				
11	4	±0.015	1.8	
12				
13	5	±0.015	2.3	
14				
15				
16				
17	6	±0.018	2.8	
18				
19				
20				
21				
22	8	±0.018	3.3	+0.2 0
23				
24				
25				
26				
28				
29				
30				
31				
32				
33	10	±0.0215	3.8	
34				
35				
38				
40	12	±0.0215	3.8	
42				
43				
44				
45				
46	14	±0.0215	3.8	
47				
48				
49				
50				



### 孔徑&止付螺絲對照表

dH7	螺絲規格
4	M3
5	
6	
6.35	
7	
8	M4
9	
10	
11	
12	M5
13	
14	
15	
16	
17	M6
18	
19	
20	
21	
22	
23	
24	
25	
26	
28	M8
29	
30	
31	
32	
33	
34	
35	
37	
38	
40	M10
42	
43	
44	
45	
46	
47	
48	
50	
52	
55	
57	
60	