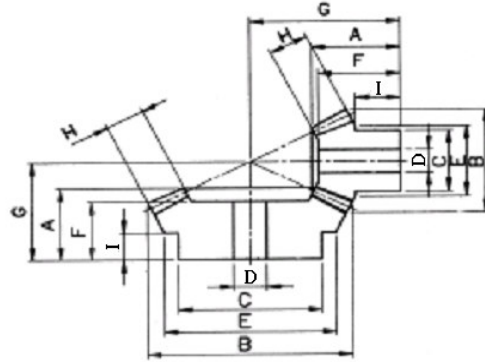




傘齒輪 M1~M5 速比1:3



速比	TYPE	材質	處理
1:3	GUSD	S45C	染黑
	GUSH	S45C	無電解鍍
	GUSS	SUS303	—
	GUMC	MC901	—

※S45C：齒面高週波

模數M=1~5

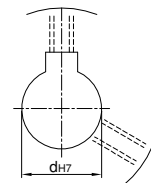
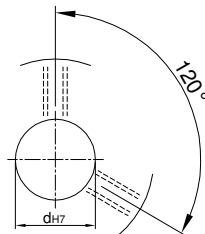
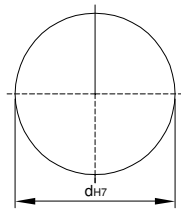
Catalog No.			齒數	軸徑 Bore D	A	B	C	I	E	F	G	H
速比	TYPE	模數										
1:3	GUSD GUSH GUSS GUMC	M1	15	6	14.5	16.9	12	8	12.5	12.44	29.57	6
			45	6	12.5	45.63	42	5.5	42	10.46	17.89	6
		M1.5	15	8	23.5	25.35	18	13	18	22.7	47.42	10
			45	12	21	68.45	40	11.5	64	16.8	28.06	10
		M2	15	10	30	33.79	24	14.5	24	28.96	60.34	15
			45	12	31	91.26	65	17.5	85	27.13	39.96	15
		M2.5	15	12	40	42.24	30	19.5	30	38.79	76.75	20
			45	15	38	114.08	70	21.5	106.73	31.62	48.85	20
		M3	15	15	45	50.69	35	21	35	43.14	90.03	23
			45	21	39	136.9	80	21.5	129.47	31.82	52.3	23
		M4	15	16	54	67.59	49.5	23	49.5	51.74	114.67	30
			45	20	51	182.53	90	23	169.26	40.42	68.92	30
		M5	15	20	67	84.49	60	30	60	63.85	145.18	35
			45	25	50	228.16	100	20	214.72	37.73	73.09	35

U圓孔(aperture)

T圓孔(aperture)+攻牙(TAP)

TG NEWS JIS KEY WAY+TAP

TG 新JIS鍵槽+攻牙



Order
訂貨代號

Catalog No.	—	齒數	—	軸孔內徑&加工
1:3GUSD M1	—	15	—	U6

Order
訂貨代號

Catalog No.	—	齒數	—	軸孔內徑&加工
1:3GUSD M1	—	45	—	U6

註1：如需規格表以外特殊加工，請來電告知。

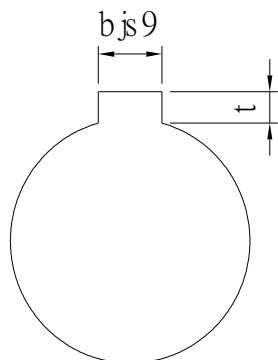
註2：軸孔配合之鍵槽止付螺絲，請對照孔徑鍵槽止付螺絲對照表



孔徑 鍵槽 止付螺絲設計對照表

孔徑&鍵槽尺寸表

dH7	鍵槽寬度bjs9		鍵槽深度	t公差
8	3	±0.0125	1.4	+ 0.1 0
9				
10				
11	4	±0.015	1.8	
12				
13				
14	5	±0.015	2.3	
15				
16				
17				
18	6	±0.015	2.8	
19				
20				
21				
22	8	±0.018	3.3	+ 0.2 0
23				
24				
25				
26				
28				
29				
30				
31				
32				
33	10	±0.0215	3.8	
34				
35				
38				
40	12	±0.0215	3.8	
42				
43				
44				
45	14	±0.0215	3.8	
46				
47				
48				
50				
50				



孔徑&止付螺絲對照表

dH7	螺絲規格
4	M3
5	
6	
6.35	
7	
8	M4
9	
10	
11	
12	M5
13	
14	
15	
16	
17	M6
18	
19	
20	
21	
22	
23	
24	
25	
26	
28	M8
29	
30	
31	
32	
33	
34	
35	
37	
38	
40	M10
42	
43	
44	
45	
46	
47	
48	
50	
52	
55	
57	
60	